

For Immediate Release

TAIYO YUDEN Begins Provision of Web-based Component Data Viewer “TY-COMPAS”

Simple and Easy to Use Search and Browsing of the Latest Electronic Component Data

TOKYO, September 26, 2011 — TAIYO YUDEN CO., LTD. today announced the development of a web-based component data viewer named “TY-COMPAS” (Taiyo Yuden COMPONent Assist System) that enables the easy selection of electronic components through its search and browsing functions.

This web-based component data viewer has been developed based on the “TAIYO YUDEN Components Selection Guide & Data Library” announced in April 2008, and can be used without being installed on a PC. In addition to existing functions for searching data, displaying graphs of component characteristics, and outputting data for simulators, TY-COMPAS (Taiyo Yuden COMPONent Assist System) enables use of the latest electronic component data. Engineers’ perspectives are given to the details of items so that this viewer can be more comfortable and easier to use.

In addition to capacitors, inductors, and bead inductors, we also started a chart published detailed data of polyacene capacitors, lithium ion capacitors and RF components. Henceforth, TAIYO YUDEN intends to continue making efforts in the field of software to enable our customers to swiftly and accurately select and use our product.

The main functions of TY-COMPAS (Taiyo Yuden COMPONent Assist System) are as shown below.

(1) Component Data Search

In addition to searching by ordering code, component name, and application, data can be searched by specification of component size and characteristics. Furthermore, advanced search is now possible by specifying additional criteria and a search range.

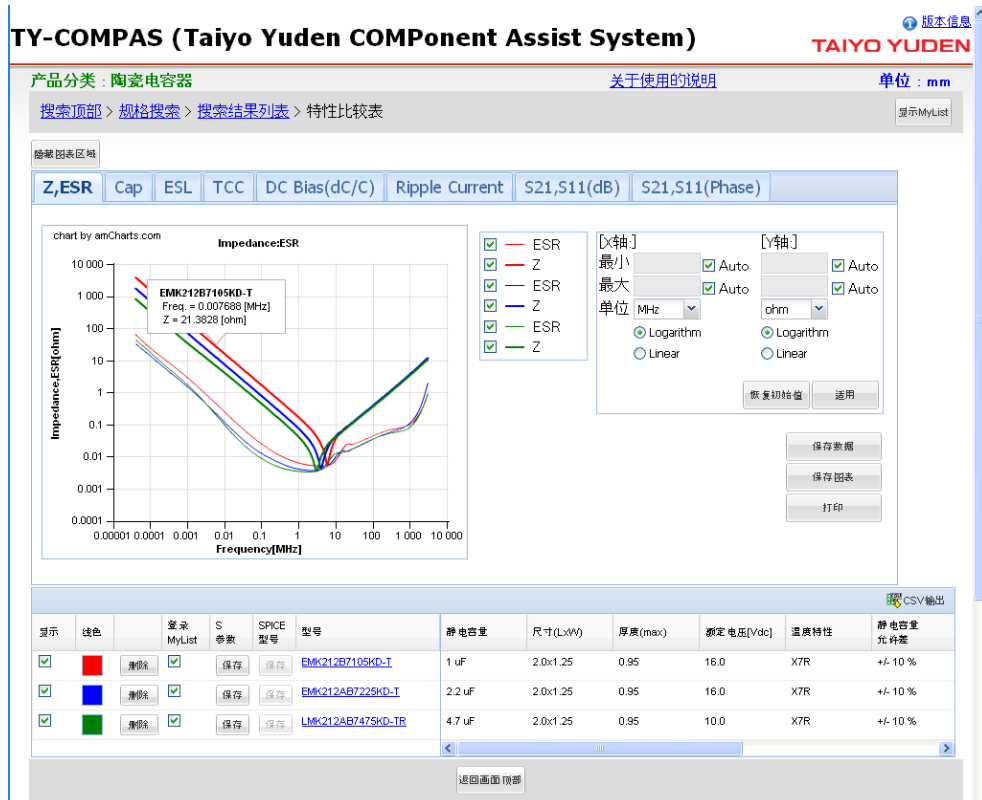
(2) Component Characteristic Graph Display

By selecting characteristic graphs that are displayed for each component from search results, data for multiple components can be compared on a single graph.

(3) Data Output for Simulators

Data files containing S-parameter for high frequency circuit simulators can be output, as can equivalent circuit files for the analog circuit simulator SPICE.

Furthermore, there are other varieties of functions such as; Tree Search which facilitates categorized search from many kinds of viewpoints and users can save information and history of viewed components with My List.



TY-COMPAS (Taiyo Yuden COMPONENT Assist System) screenshot
(Graph-based characteristic comparison of ceramic capacitors)

Recommended system requirements for TY-COMPAS (Taiyo Yuden COMPONENT Assist System)

Browser: Windows Internet Explorer 7.x or later, Mozilla Firefox 4.x or later

Display resolution: XGA (1024 x 768) or higher

* Before using TY-COMPAS (Taiyo Yuden COMPONENT Assist System) please ensure that you read the precautions for use, disclaimer, and software license agreement.

TY-COMPAS (Taiyo Yuden COMPONENT Assist System) is scheduled for release at October on the TAIYO YUDEN website in Japanese, English, Chinese, and Korean (links from the top of each language website). It will also be exhibited on a panel at the TAIYO YUDEN booth at CEATEC JAPAN 2011, which is taking place from October 4 at Makuhari Messe (Mihama-ku, Chiba City, Chiba, Japan).