

Stock Information

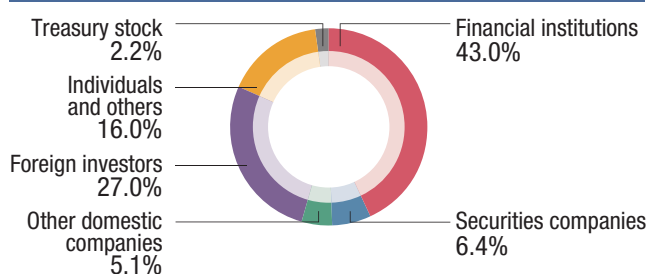
As of March 31, 2014

Stock Information

Common stock Authorized: 300,000,000
 Issued: 120,481,395
 (Including 2,733,602 shares of treasury stock)

Stock exchange listing: First section of Tokyo Stock Exchange
 Securities code: 6976
 Unit of trading: 100 shares
 Number of shareholders: 14,235

Composition of Shareholders



*Figures have been rounded to one decimal place.

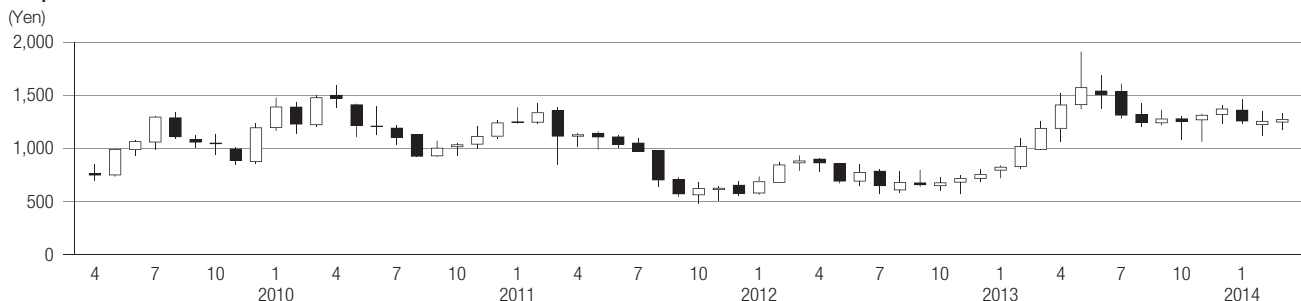
Major Shareholders

Name	Number of shares (hundreds)	Voting rights (%)
The Master Trust Bank of Japan, Ltd. (Trust Account)	150,232	12.46
Japan Trustee Services Bank, Ltd. (Trust Account)	88,455	7.34
STATE STREET BANK AND TRUST COMPANY	46,553	3.86
NORTHERN TRUST CO. (AVFC) RE 15PCT TREATY ACCOUNT	45,996	3.81
Sumitomo Mitsui Banking Corporation	40,000	3.32
BNP Paribas Securities (Japan) Ltd.	33,000	2.73
The Iyo Bank, Ltd.	30,001	2.49
Trust & Custody Services Bank, Ltd. (Securities Investment Trust Account)	29,287	2.43
THE BANK OF NEW YORK-JASDEC TREATY ACCOUNT	26,774	2.22
THE BANK OF NEW YORK 133522	21,447	1.78

Notes: 1. The Company holds 2,733,602 shares of treasury stock; however, it is excluded from the above-mentioned major shareholders.
 2. The figures in this table are rounded down.

Stock Price/Trading Volume

Stock price



Trading volume

