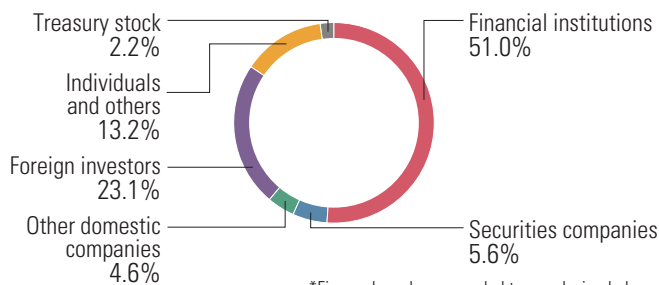


# Stock Information As of March 31, 2017

## Stock Information

Common stock	Authorized:	300,000,000
	Issued:	120,481,395
	(Including 2,650,804 shares of treasury stock)	
Stock exchange listing:	First section of Tokyo Stock Exchange	
Securities code:	6976	
Unit of trading:	100 shares	
Number of shareholders:	13,387	

## Composition of Shareholders



## Major Shareholders

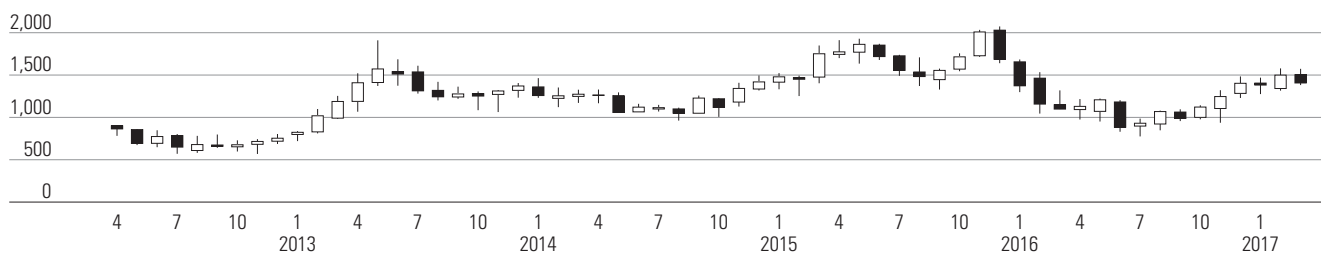
Name	Number of shares (hundreds)	Voting rights (%)
The Master Trust Bank of Japan, Ltd. (Trust Account)	232,327	19.7
Japan Trustee Services Bank, Ltd. (Trust Account)	112,236	9.5
Sumitomo Mitsui Banking Corporation	40,000	3.3
Trust & Custody Services Bank, Ltd. (Securities Investment Trust Account)	35,309	2.9
The Iyo Bank, Ltd.	30,001	2.5
Japan Trustee Services Bank, Ltd. (Trust Account 9)	27,516	2.3
BNP Paribas Securities (Japan) Ltd.	20,554	1.7
HSBC ASIA EQUITY FINANCE-JAPAN EQUITIES (TRADING)	20,008	1.6
Goldman Sachs Japan Co., Ltd.	20,000	1.6
Sato Traffic Orphan Welfare Fund	19,166	1.6

Notes 1. The Company holds 2,650,804 shares of treasury stock; however, this is excluded from the above-mentioned major shareholders.  
2. The figures in this table are rounded down.

## Stock Price/Trading Volume

### Stock price

2,500 (Yen)



### Trading volume

100,000 (Thousand shares)

