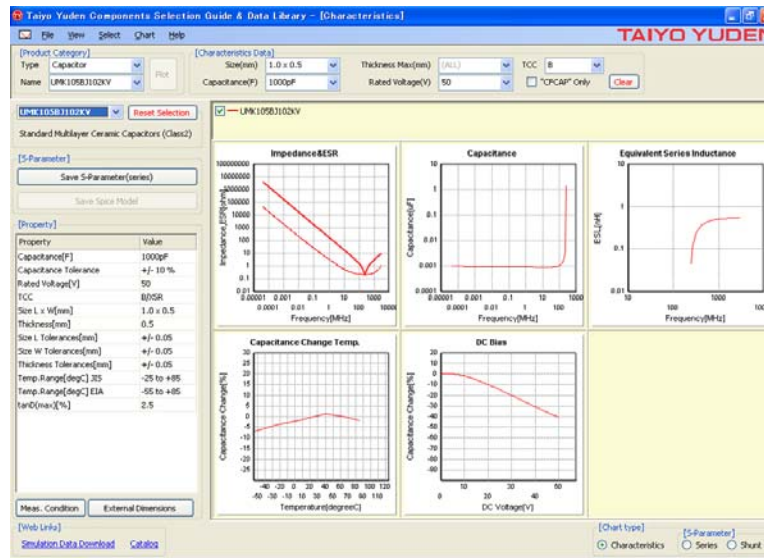


Taiyo Yuden: Electronic Components Search and Viewer Function Eases Components Selection

—Software Available on Taiyo Yuden Web Page—



Taiyo Yuden Co., Ltd. has developed the “Taiyo Yuden Components Selection Guide & Data Library” (hereafter called the “new data library”), a components catalog database combined with viewer function for easing components search and viewing.

The new data library can be downloaded from the Taiyo Yuden web page ([Global] URL : <http://www.yuden.co.jp/us/product/>, [North America] URL : <http://www.yuden.co.jp/ut/product/>) and installed on a PC for use. Introduction of this new data library will not only ease acquisition of technical data about Taiyo Yuden components, it also offers a powerful graphics function that will, for example, enable comparison of multiple components data on a single graph and output of simulation data necessary for circuit design.

Functions of the new data library are as follows.

Functions of “Taiyo Yuden Components Selection Guide & Data Library”

① Components data search function

In addition to searches by part number, product name, and application, data searches specifying case sizes and characteristics are also enabled.

② Component characteristics graphic display function

Display of characteristics graphs for each component can be selected by part number, product name, size, and characteristics. In addition, data for multiple components can be displayed on a single graph to enable comparisons.

③ Simulator data output function

Enables data output for the S parameters used in high frequency circuit simulators. Output in SPICE data format is also available for analog circuit simulators.

The new data library is available in an English-language version on the Taiyo Yuden web page, starting today. Furthermore, a Chinese-language version is also planned for release.

System Requirements for “Taiyo Yuden Components Selection Guide & Data Library”

OS: Microsoft Windows XP

CPU: Pentium4 or more is recommended

Display: XGA (1024 X 768) or more is preferable

Display DPI setting: 96DPI (Normal size) only

Memory Space: 256MB or more is preferable

Hard Disk Space: 300MB or more is preferable

Others: “Taiyo Yuden Components Selection Guide & Data Library” requires Microsoft .NET Framework 2.0 installed on the computer. In addition, the administrator permission is necessary to install “Taiyo Yuden Components Selection Guide & Data Library”.