

Stock Information

As of March 31, 2015

Stock Information

Common stock Authorized: 300,000,000
 Issued: 120,481,395
 (Including 2,734,253 shares of treasury stock)

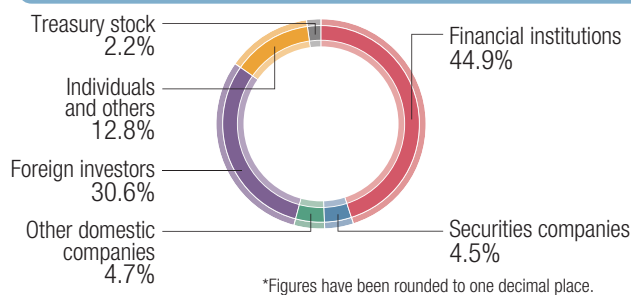
Stock exchange listing: First section of Tokyo Stock Exchange

Securities code: 6976

Unit of trading: 100 shares

Number of shareholders: 11,321

Composition of Shareholders



Major Shareholders

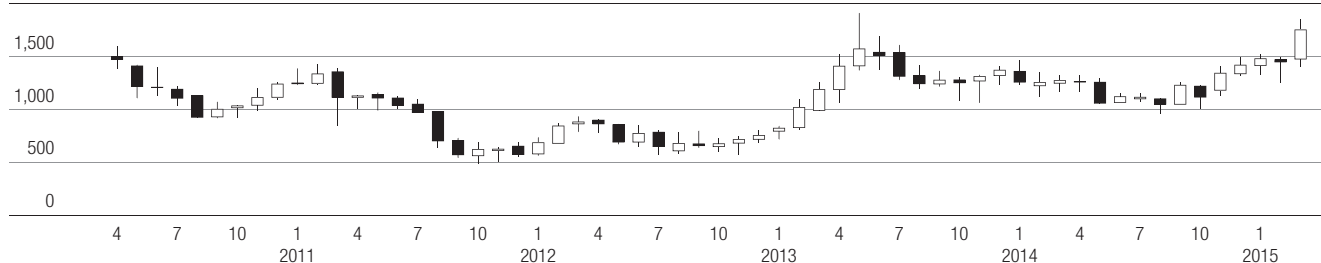
Name	Number of shares (hundreds)	Voting rights (%)
The Master Trust Bank of Japan, Ltd. (Trust Account)	185,676	15.41
Japan Trustee Services Bank, Ltd. (Trust Account)	97,381	8.08
STATE STREET BANK AND TRUST COMPANY	44,958	3.73
Sumitomo Mitsui Banking Corporation	40,000	3.32
BNP Paribas Securities (Japan) Ltd.	30,372	2.52
The Iyo Bank, Ltd.	30,001	2.49
Trust & Custody Services Bank, Ltd. (Securities Investment Trust Account)	22,950	1.90
CHASE MANHATTAN BANK GTS CLIENTS ACCOUNT ESCROW	21,610	1.79
NORTHERN TRUST CO. (AVFC) RE 15PCT TREATY ACCOUNT	19,222	1.59
Sato Traffic Orphan Welfare Fund	19,166	1.59

Notes: 1. The Company holds 2,734,253 shares of treasury stock; however, this is excluded from the above-mentioned major shareholders.
 2. The figures in this table are rounded down.

Stock Price/Trading Volume

Stock price

2,000 (Yen)



Trading volume

100,000 (Thousand shares)

