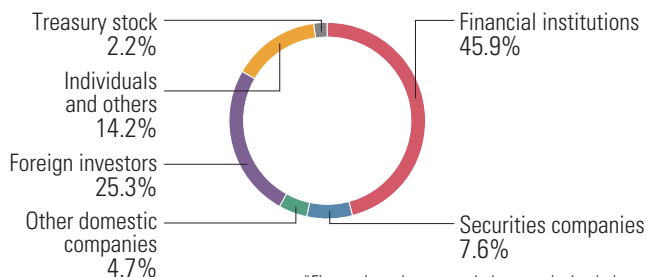


Stock Information As of March 31, 2016

Stock Information

Common stock	Authorized: 300,000,000
	Issued: 120,481,395
	(Including 2,664,538 shares of treasury stock)
Stock exchange listing:	First section of Tokyo Stock Exchange
Securities code:	6976
Unit of trading:	100 shares
Number of shareholders:	15,520

Composition of Shareholders



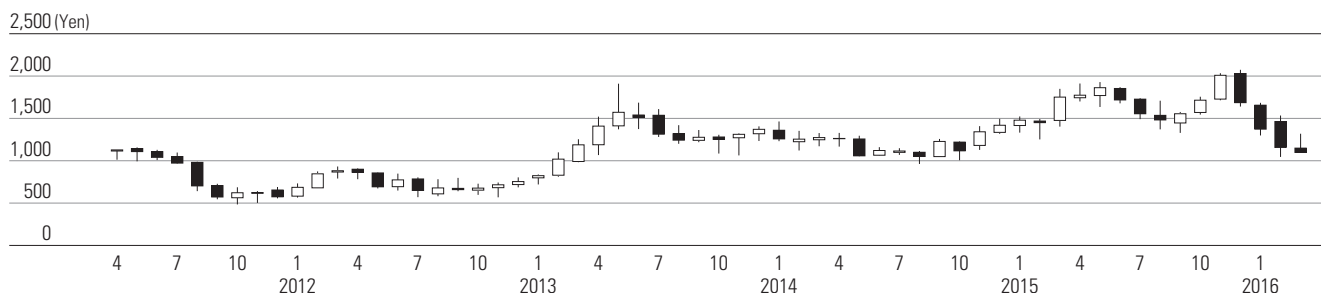
Major Shareholders

Name	Number of shares (hundreds)	Voting rights (%)
The Master Trust Bank of Japan, Ltd. (Trust Account)	203,592	17.29
Japan Trustee Services Bank, Ltd. (Trust Account)	87,763	7.45
Sumitomo Mitsui Banking Corporation	40,000	3.39
Trust & Custody Services Bank, Ltd. (Securities Investment Trust Account)	36,356	3.08
The Iyo Bank, Ltd.	30,001	2.54
BNP Paribas Securities (Japan) Ltd.	24,000	2.03
Sato Traffic Orphan Welfare Fund	19,166	1.62
CHASE MANHATTAN BANK GTS CLIENTS ACCOUNT ESCROW	18,994	1.61
Goldman Sachs Japan Co., Ltd.	17,067	1.44
Nippon Life Insurance Company	16,664	1.41

Notes 1. The Company holds 2,664,538 shares of treasury stock; however, this is excluded from the above-mentioned major shareholders.
2. The figures in this table are rounded down.

Stock Price/Trading Volume

Stock price



Trading volume

