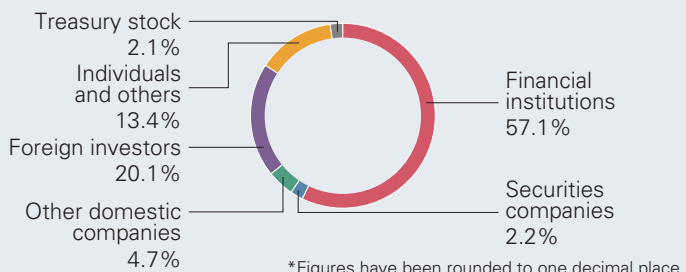


As of March 31, 2018

## Stock Information

<b>Common stock</b>	Authorized: 300,000,000
	Issued: 120,481,395 (Including 2,645,260 shares of treasury stock)
<b>Stock exchange listing</b>	First section of Tokyo Stock Exchange
<b>Securities code</b>	6976
<b>Unit of trading</b>	100 shares
<b>Number of shareholders</b>	17,315

## Composition of Shareholders



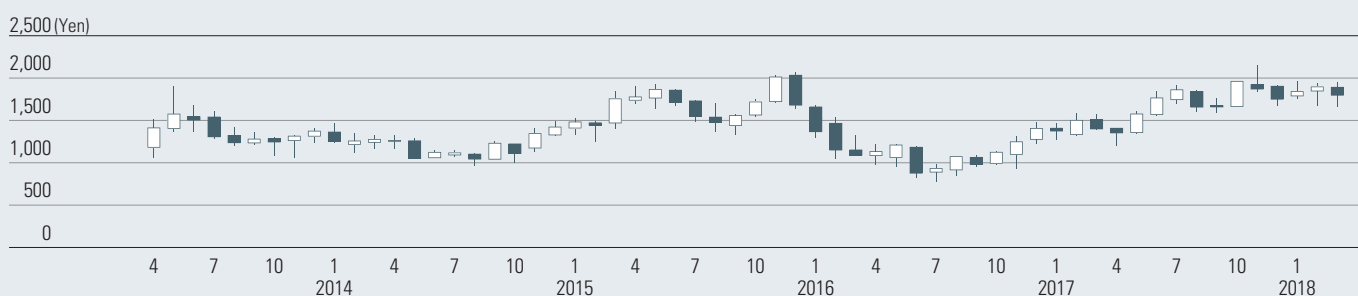
## Major Shareholders

Name	Number of shares (hundreds)	Voting rights (%)
The Master Trust Bank of Japan, Ltd. (Trust Account)	237,011	20.1
Japan Trustee Services Bank, Ltd. (Trust Account)	115,879	9.8
Japan Trustee Services Bank, Ltd. (Trust Account 9)	71,990	6.1
Sumitomo Mitsui Banking Corporation	40,000	3.3
Trust & Custody Services Bank, Ltd. (Securities Investment Trust Account)	38,868	3.2
The Iyo Bank, Ltd.	30,001	2.5
Sato Traffic Orphan Welfare Fund	19,166	1.6
GOLDMAN, SACHS & CO. REG	17,570	1.4
Japan Trustee Services Bank, Ltd. (Trust Account 5)	17,151	1.4
Nippon Life Insurance Company	16,664	1.4

Notes 1. The Company holds 2,645,260 shares of treasury stock; however, this is excluded from the above-mentioned major shareholders.  
2. The figures in this table are rounded down.

## Stock Price/Trading Volume

### Stock price



### Trading volume

