

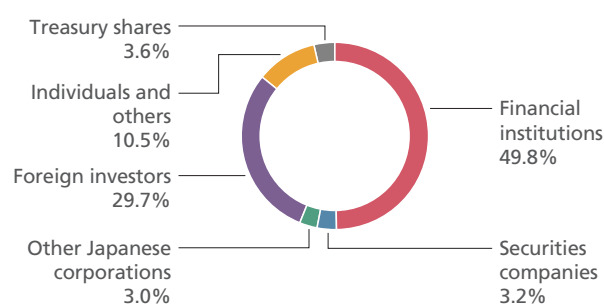
# Stock Information

As of March 31, 2021

## Stock Information

Common stock	Authorized: 300,000,000 Issued: 130,218,481 (Including 4,702,096 shares of treasury shares)
Stock exchange listing	First section of Tokyo Stock Exchange
Securities code	6976
Unit of trading	100 shares
Number of shareholders	31,804

## Composition of Shareholders



\*Figures are rounded down to one decimal place.

## Major Shareholders

Name	Number of shares (shares)	Shareholding ratio (%)
The Master Trust Bank of Japan, Ltd. (Trust Account)	29,390,900	23.4
Custody Bank of Japan, Ltd. (Trust Account)	13,854,300	11.0
Custody Bank of Japan, Ltd. (Securities Investment Trust Account)	3,026,500	2.4
The Iyo Bank, Ltd.	3,000,100	2.3
Sumitomo Mitsui Banking Corporation	2,000,000	1.5
Sato Traffic Orphan Welfare Fund	1,916,640	1.5
JP MORGAN CHASE BANK 385632	1,787,639	1.4
BBH BOSTON CUSTODIAN FOR NEXT GENERATION CONNECTIVITY FUND A SERIES TRUST 620818	1,734,300	1.3
NIPPON LIFE INSURANCE COMPANY	1,666,450	1.3
STATE STREET BANK WEST CLIENT - TREATY 505234	1,577,800	1.2

Notes 1. The Company holds 4,702,096 shares of treasury shares; however, this is excluded from the above-mentioned major shareholders.

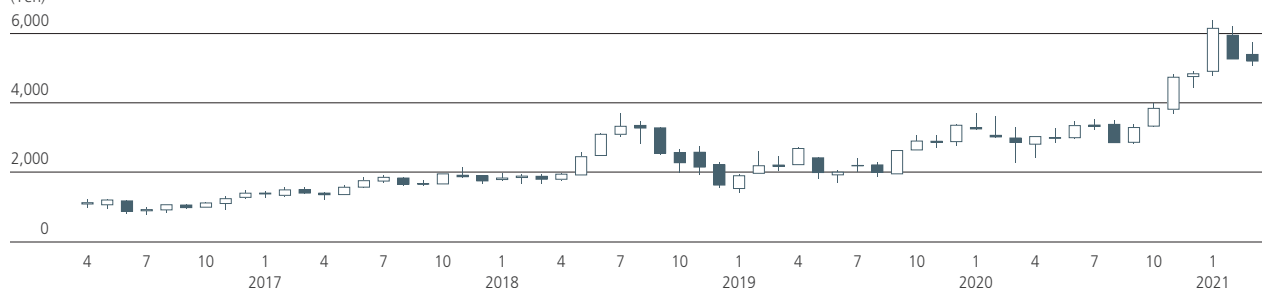
2. Shareholding ratio is calculated excluding the number of treasury shares.

3. Figures are rounded down to one decimal place.

## Stock Price/Trading Volume

### Stock price

(Yen)



### Trading volume

(Thousand shares)

