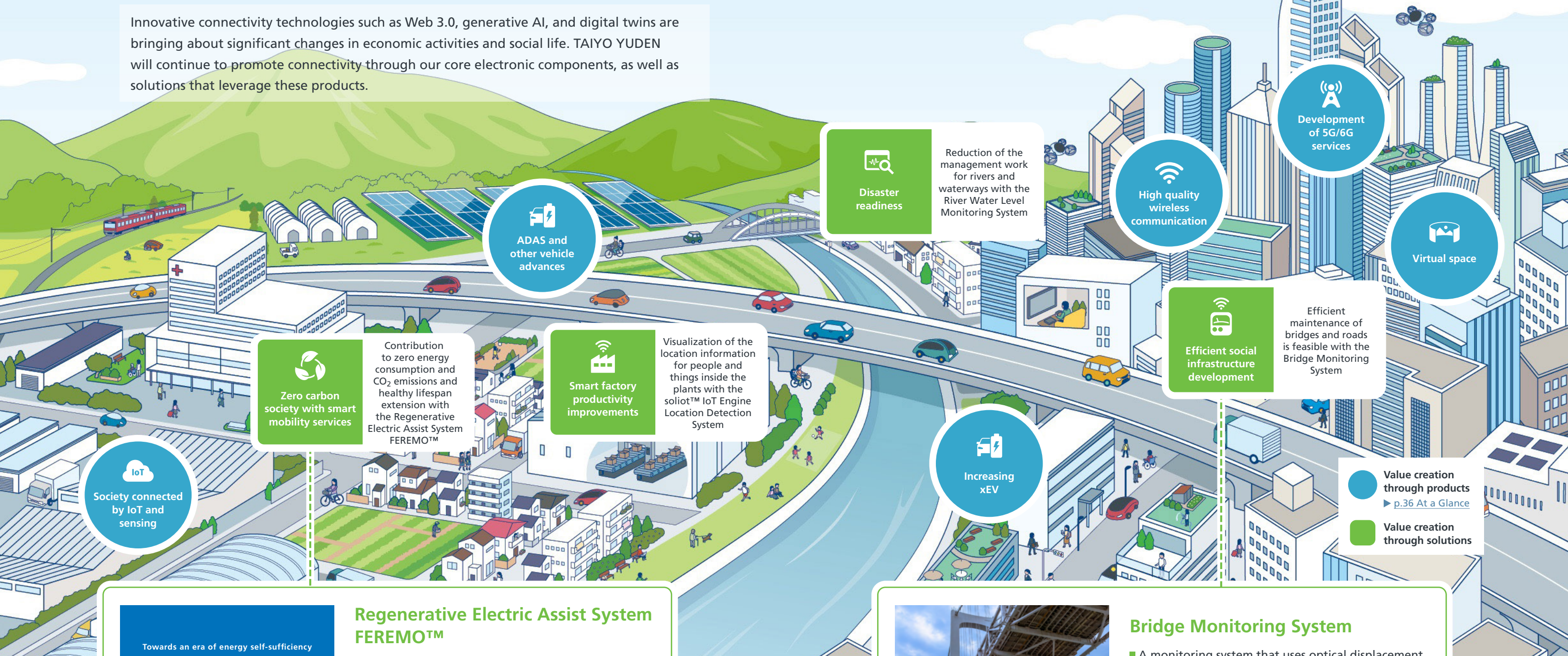


Business Activities that Provide Value

TAIYO YUDEN's Initiatives to Promote Connectivity

Innovative connectivity technologies such as Web 3.0, generative AI, and digital twins are bringing about significant changes in economic activities and social life. TAIYO YUDEN will continue to promote connectivity through our core electronic components, as well as solutions that leverage these products.



Regenerative Electric Assist System FEREMO™

- A human- and eco-friendly mobility solution capable of traveling up to 1,000 km* on a single charge.
- During braking or controlling speed while going downhill, the motor generates electricity and charges the battery.
- On downhill slopes, regenerative braking is utilized to prevent excessive speed.



Bridge Monitoring System

- A monitoring system that uses optical displacement sensors capable of measuring minute displacements.
- By installing the system on bridges, it can assess the weight of passing vehicles and traffic volume, and predict the bridge's durability.
- Helps develop more optimized repair and reinforcement plans for bridges.

*Measurement pattern according to JIS (JIS D9115:2018) for prototype bicycles (Eco Mode 1,000 km, Middle Mode 200 km, High Mode 100 km)