

Wire-wound Ferrite Inductors for Class D Amplifier LCXA for Automotive Body & Chassis and Infotainment

Code in front of Series have been extracted from Part number, which describes the segment of products, such as kinds and characteristics.

AEC-Q200 Grade 3 (we conduct the evaluation at the test condition of Grade 3.)

*Operating environment Temp:-40~85°C

REFLOW

AEC-Q200

PART NUMBER

*Operating Temp. : -40~125°C(Including self-generated heat)

L	C	X	A	F	6	0	6	0	Y	E	L	3	R	3	M	M	R
①	②	③	④	⑤	⑥	⑦	⑧										

①Series

Code (1)(2)(3)(4)	
LCXA	Wire-wound Ferrite Inductors for Class D Amplifiers for Automotive Body & Chassis and Infotainment

(1) Product Group

Code	
L	Inductors

(3) Type

Code	
X	Ferrite Wire-wound (Drum type)

(2) Category

Code	Recommended equipment	Quality Grade
C	Automotive Electronic Equipment (Body & Chassis, Infotainment)	2

(4) Features, Characteristics

Code	
A	For audio filters

②Features

Code	Feature
F	Bottom electrode (Ag X solder) for fillet

⑤Packaging

Code	Packaging
L	Taping

③Dimensions (L × W)

Code	Dimensions (L × W) [mm]
6060	6.0 × 6.0

⑥Nominal inductance

Code (example)	Nominal inductance [μH]
3R3	3.3

※R=Decimal point

④Dimensions (H)

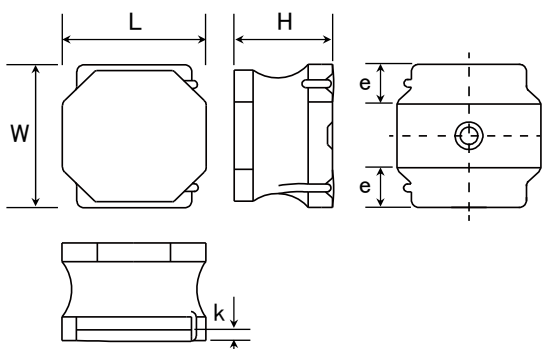
Code	Dimensions (H) [mm]
YE	4.5

⑦Inductance tolerance

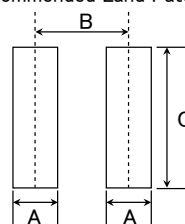
Code	Inductance tolerance
M	±20%

⑧Internal code

STANDARD EXTERNAL DIMENSIONS / STANDARD QUANTITY



Recommended Land Patterns



Type	A	B	C
6060	2.4	5.0	4.8

Unit: mm

Type	L	W	H	e	k(ref)	Standard quantity [pcs] Taping
6060YE	6.0±0.2 (0.236±0.008)	6.0±0.2 (0.236±0.008)	4.5 max (0.177 max)	1.65±0.3 (0.053±0.012)	0.3 min (0.012 min)	1500

Unit: mm(inch)