

# Wire-wound Metal Power Inductors MCOIL™ LSA/LLAN series

## Wire-wound Metal Power Inductors MCOIL™ LSAP/LLAP series

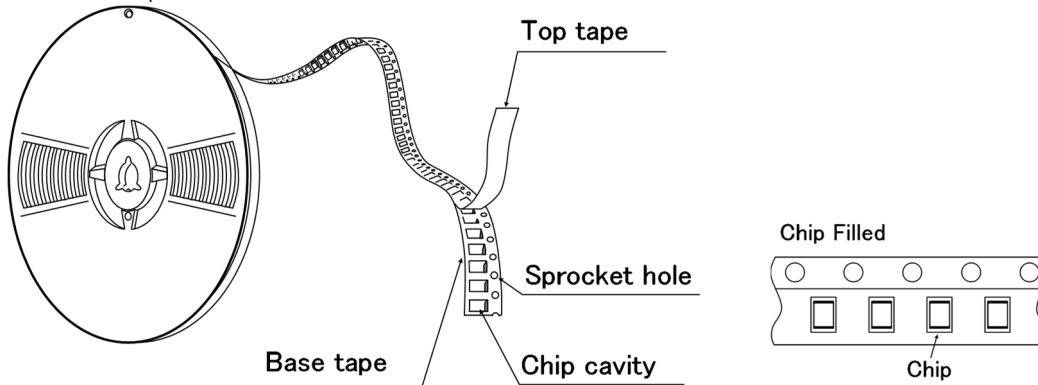
### PACKAGING

#### ① Minimum Quantity

Type	Standard Quantity [pcs]
	Tape & Reel
2016KK	3000
2520KK	3000
2520MK	3000

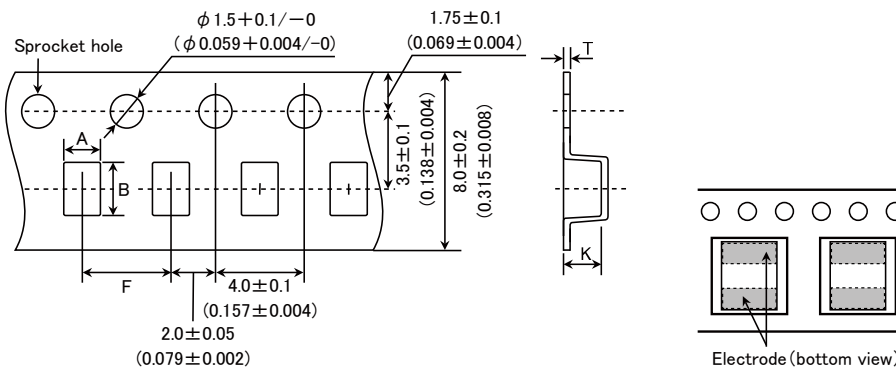
#### ② Tape Material

##### ● Embossed Tape



#### ③ Taping dimensions

##### ● Embossed tape 8mm wide (0.315 inches wide)

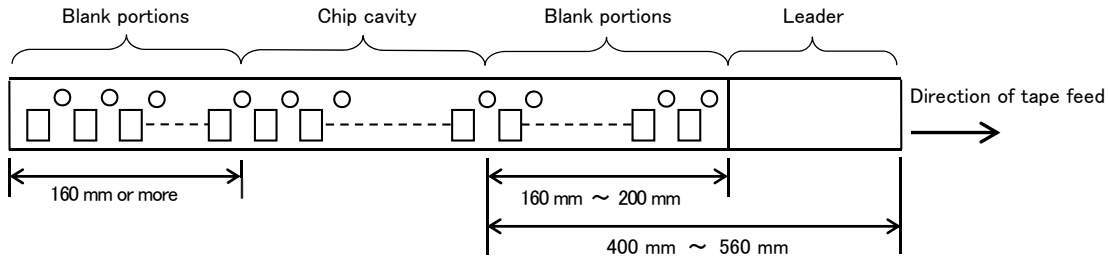


Type	Chip cavity		Insertion pitch F	Tape thickness	
	A	B		T	K
2016KK	$1.9 \pm 0.1$ ( $0.075 \pm 0.004$ )	$2.3 \pm 0.1$ ( $0.091 \pm 0.004$ )	$4.0 \pm 0.1$ ( $0.157 \pm 0.004$ )	$0.25 \pm 0.05$ ( $0.009 \pm 0.002$ )	$1.2 \text{ max}$ ( $0.047 \text{ max}$ )
2520KK	$2.3 \pm 0.1$ ( $0.091 \pm 0.004$ )	$2.8 \pm 0.1$ ( $0.110 \pm 0.004$ )	$4.0 \pm 0.1$ ( $0.157 \pm 0.004$ )	$0.3 \pm 0.05$ ( $0.012 \pm 0.002$ )	$1.25 \text{ max}$ ( $0.049 \text{ max}$ )
2520MK	$2.3 \pm 0.1$ ( $0.091 \pm 0.004$ )	$2.8 \pm 0.1$ ( $0.110 \pm 0.004$ )	$4.0 \pm 0.1$ ( $0.157 \pm 0.004$ )	$0.3 \pm 0.05$ ( $0.012 \pm 0.002$ )	$1.4 \text{ max}$ ( $0.055 \text{ max}$ )

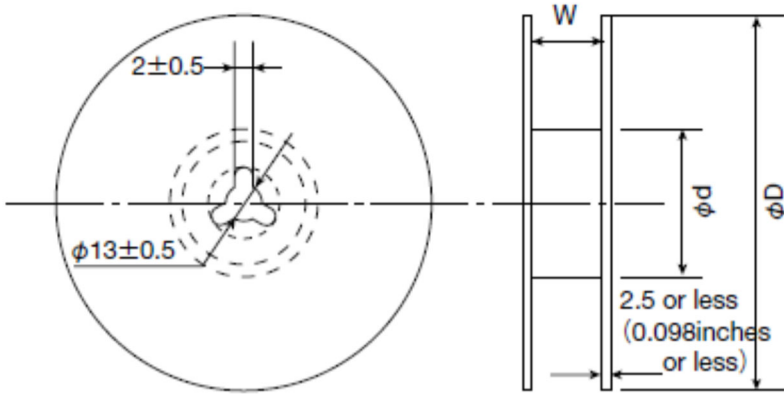
Unit: mm (inch)

► This catalog contains the typical specification only due to the limitation of space. When you consider the purchase of our products, please check our specification. For details of each product (characteristics graph, reliability information, precautions for use, and so on), see our Web site (<http://www.ty-top.com/>).

#### ④ Leader and Blank portion



#### ⑤ Reel size



Type	Reel size (Reference values)		
	$\phi D$	$\phi d$	$W$
2016KK	180+0/-3	60+1/-0	10.0±1.5
2520KK	(7.087+0/-0.118)	(2.36+0.039/0)	(0.394±0.059)
2520MK			

Unit: mm (inch)

#### ⑥ Top Tape Strength

The top tape requires a peel-off force of 0.1 to 1.2N in the direction of the arrow as illustrated below.

