

TAIYO YUDEN Component Library for Microwave Office

- Installation manual -

Contents

How to install **TAIYO YUDEN Library**
(equal or later than version 11.0)

How to install **TAIYO YUDEN Library**
(equal or earlier than version 10.08)

How to use **TAIYO YUDEN Library** on **Microwave Office**

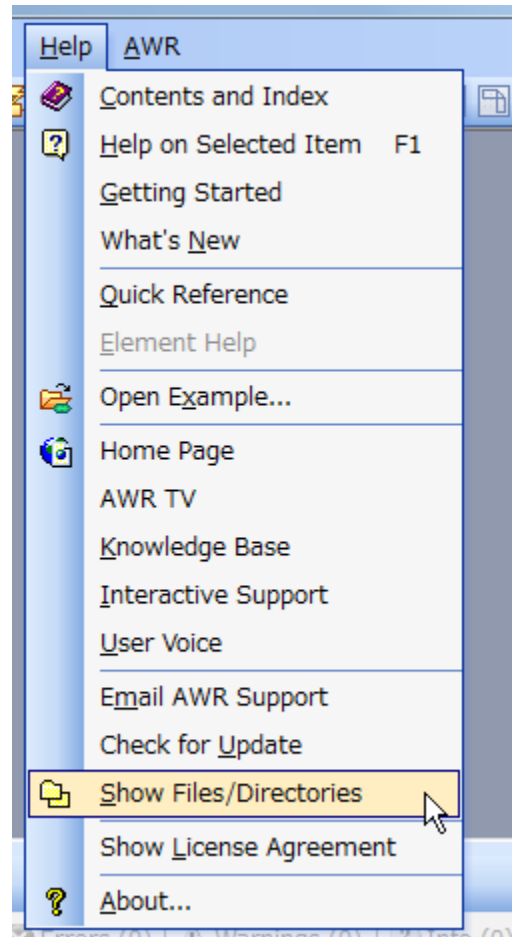
How to install **TAIYO YUDEN Library** (equal or later than version 11.0)

How to install **TAIYO YUDEN Library** (equal or later than version 11.0)

Step1. Unzip “AW_TY**.zip” to any folder.

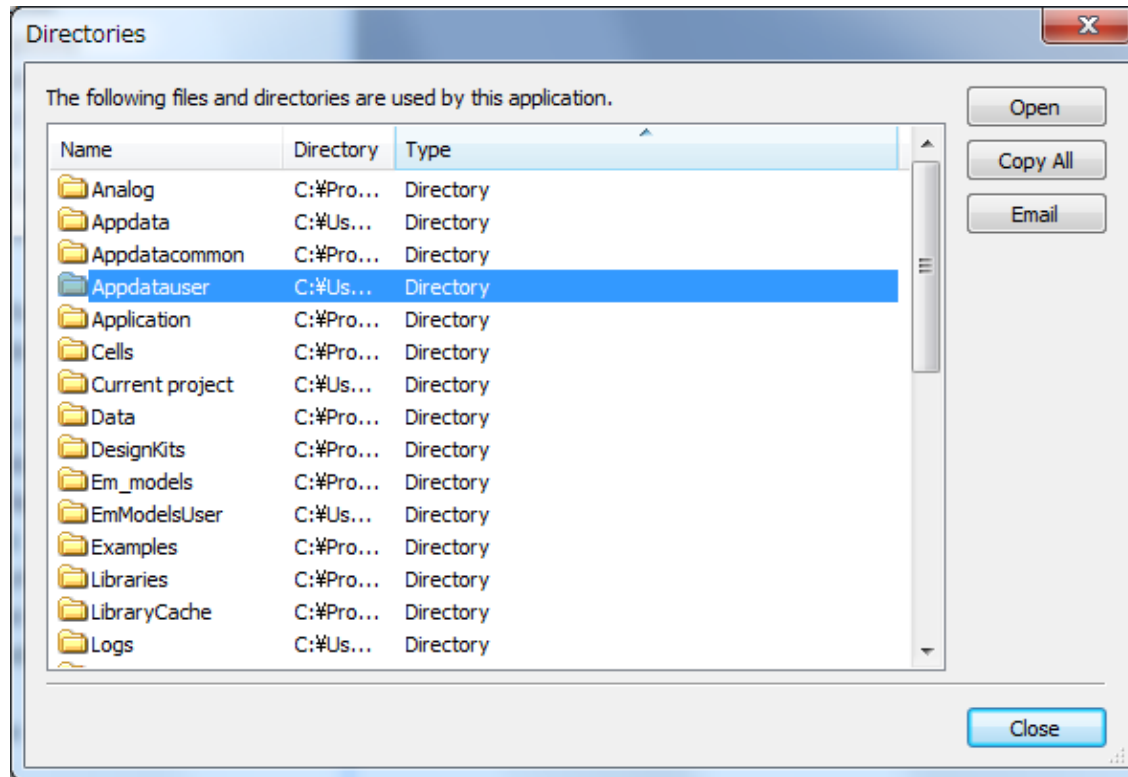
Step2. Launch AWR Design Environment.

Step3. Choose Help > Show Files/Directories.
Then the Directory Dialog will open.



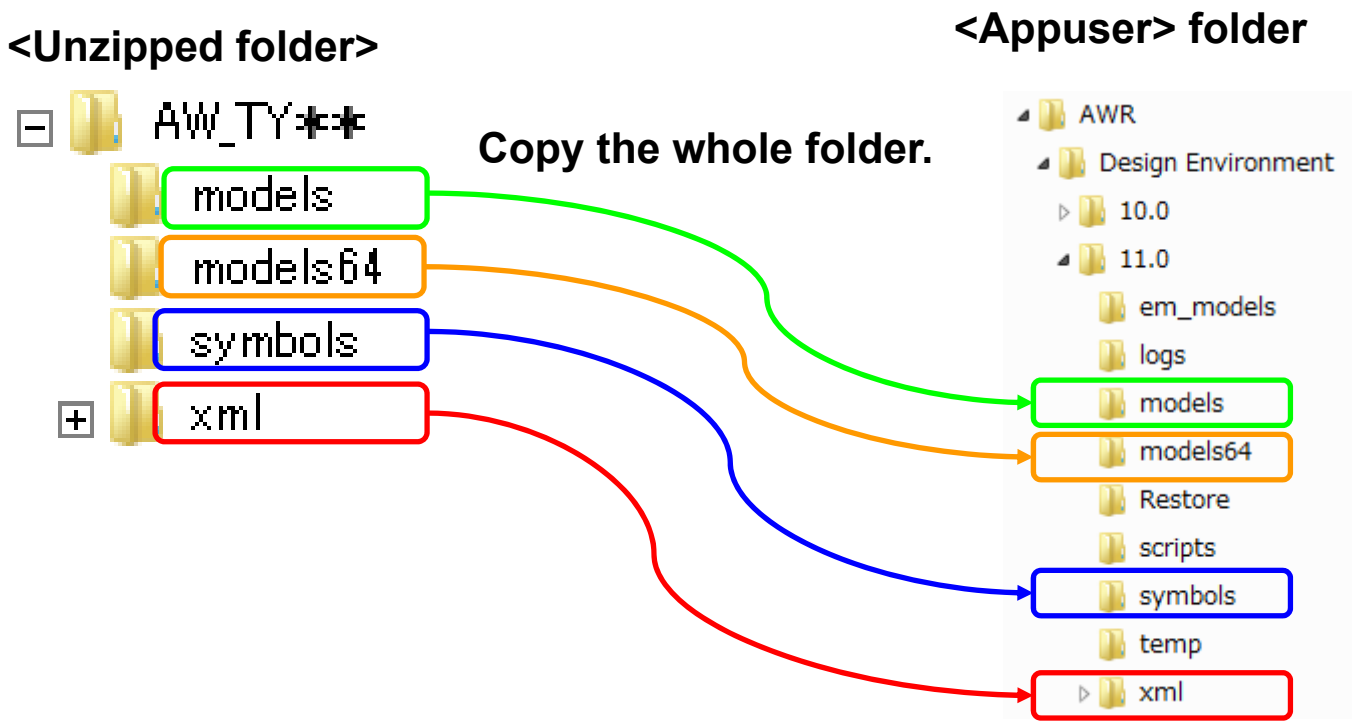
How to install TAIYO YUDEN Library (equal or later than version 11.0)

Step4. On the Directory dialog, choose Appdatauser and click Open.
Then the <Appuser> folder will open.



How to install TAIYO YUDEN Library (equal or later than version 11.0)

Step5. Copy the unzipped files at step1 to <Appuser> folder.



The installation is finished here.

Restart AWR Design Environment to use TAIYO YUDEN Library.

How to install **TAIYO YUDEN Library** (equal or earlier than version 10.08)

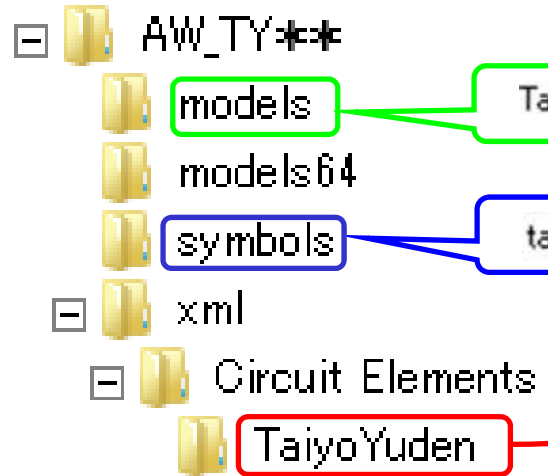
How to install TAIYO YUDEN Library (equal or earlier than version 10.08)

Step1. Unzip “AW_TY**“.zip” to any folder.

Step2. Copy the unzipped files into the directory where Microwave Office is installed (<MW-Office>)

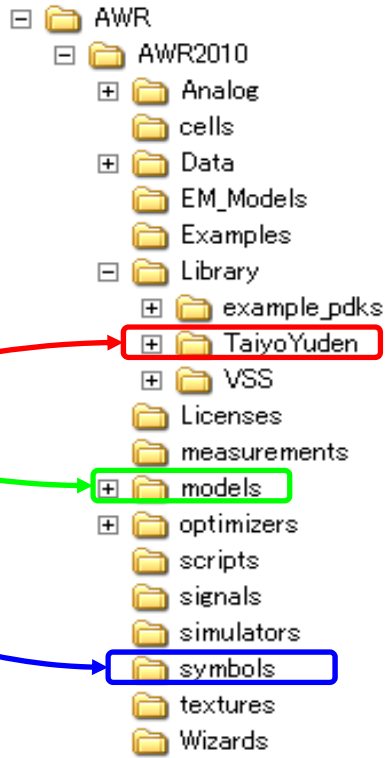
***Delete the folder ”<MW-Office>\Library\TaiyoYuden” if it already exists, before installing current version of the Library.**

<Unzipped folder>



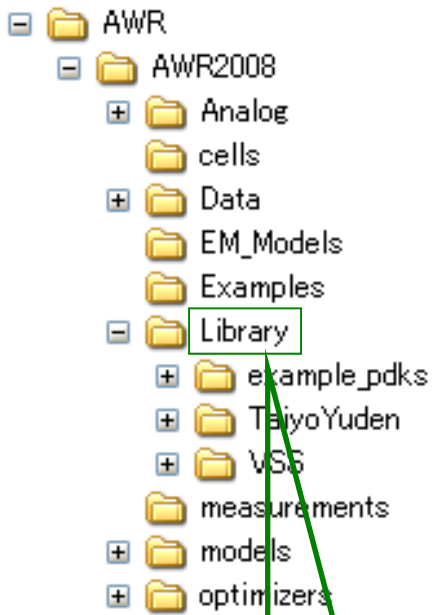
Copy the whole folder

<MW-Office> folder



TAIYO YUDEN

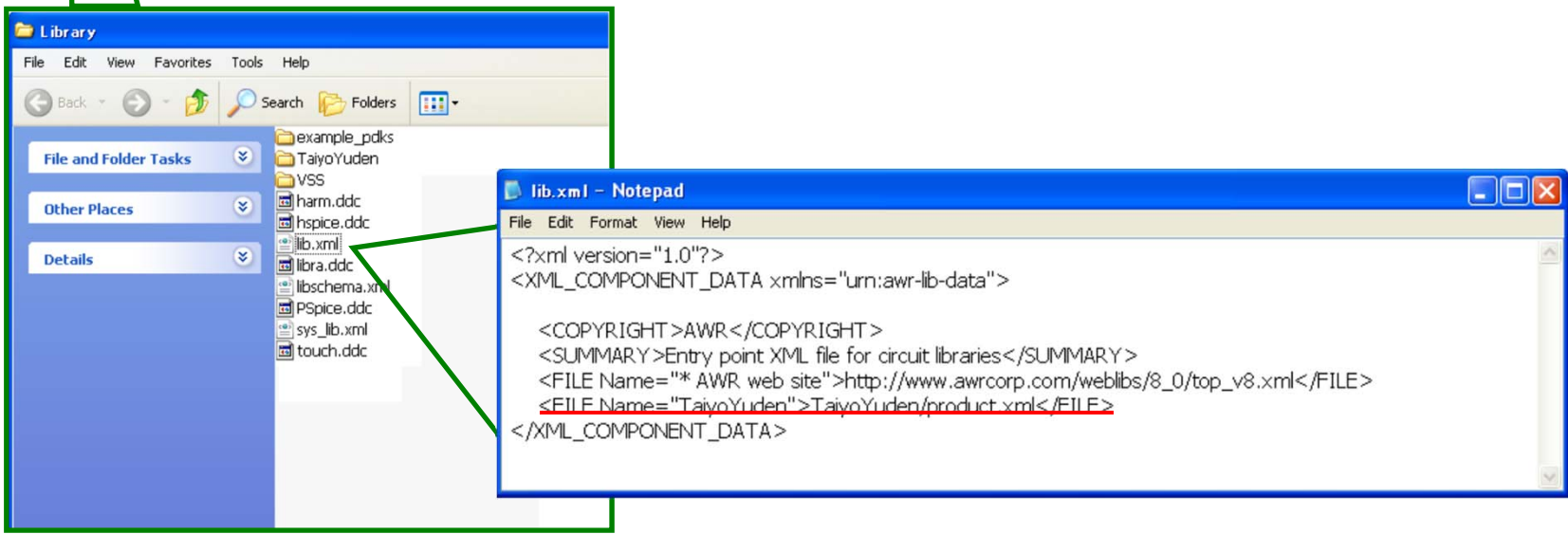
How to install TAIYO YUDEN Library (equal or earlier than version 10.08)



```
<FILE Name="TaiyoYuden">TaiyoYuden/product.xml</FILE>
```

**This step may be omitted if this line already exists.*

Step4. Overwrite lib.xml
And you have completed the installation.



How to use **TAIYO YUDEN Library** on **Microwave Office**

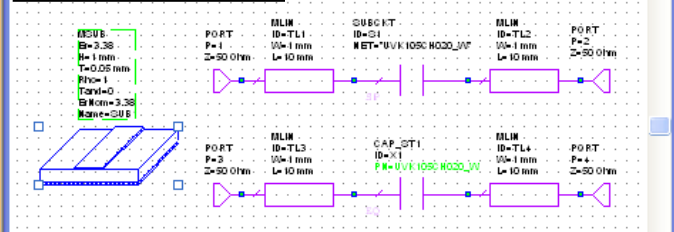
How to use TAIYO YUDEN Library on Microwave Office

1). Select a group of components you need from "Libraries / TaiyoYuden"

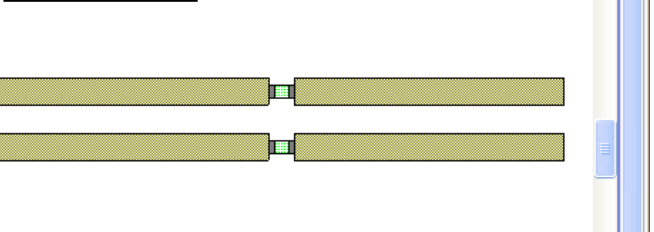
Models	Description
UVK105CH0R3_W	0.3 pF,TCC: CH, Rated Voltage: 50
UVK105CH0R4_W	0.4 pF,TCC: CH, Rated Voltage: 50
UVK105CH0R5_W	0.5 pF,TCC: CH, Rated Voltage: 50
UVK105CH0R6_W	0.6 pF,TCC: CH, Rated Voltage: 50
UVK105CH0R7_W	0.7 pF,TCC: CH, Rated Voltage: 50
UVK105CH0R8_W	0.8 pF,TCC: CH, Rated Voltage: 50
UVK105CH0R9_W	0.9 pF,TCC: CH, Rated Voltage: 50
UVK105CH010_W	1.0 pF,TCC: CH, Rated Voltage: 50
UVK105CH1R1_W	1.1 pF,TCC: CH, Rated Voltage: 50
UVK105CH1R2_W	1.2 pF,TCC: CH, Rated Voltage: 50
UVK105CH1R3_W	1.3 pF,TCC: CH, Rated Voltage: 50
UVK105CH1R5_W	1.5 pF,TCC: CH, Rated Voltage: 50
UVK105CH1R6_W	1.6 pF,TCC: CH, Rated Voltage: 50
UVK105CH1R8_W	1.8 pF,TCC: CH, Rated Voltage: 50
UVK105CH020_W	2.0 pF,TCC: CH, Rated Voltage: 50
UVK105CH2R2_W	2.2 pF,TCC: CH, Rated Voltage: 50
UVK105CH2R4_W	2.4 pF,TCC: CH, Rated Voltage: 50
UVK105CH2R7_W	2.7 pF,TCC: CH, Rated Voltage: 50
UVK105CH030_W	3.0 pF,TCC: CH, Rated Voltage: 50
UVK105CH3R3_W	3.3 pF,TCC: CH, Rated Voltage: 50

a

Schematic

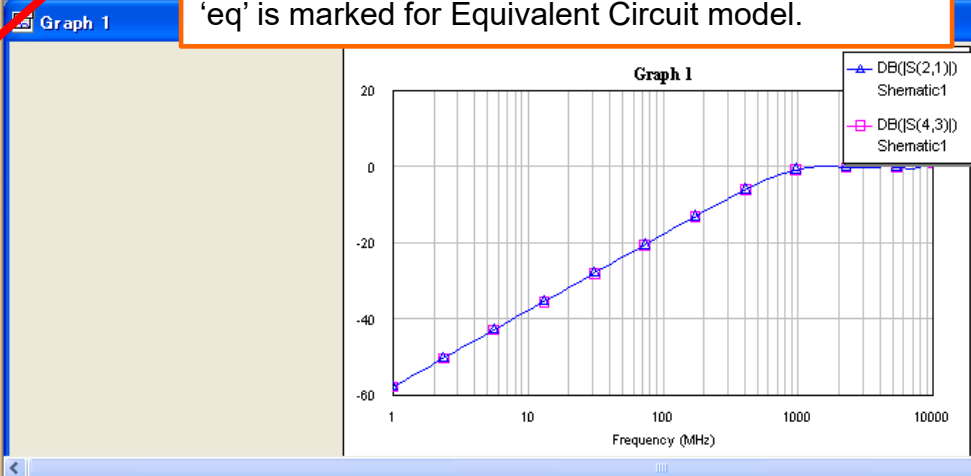


Layout



* if the component data is S-parameter, 'sp' is marked at the lower left corner of the symbol, and 'eq' is marked for Equivalent Circuit model.

Analysis results



2). Drag the desired component from "Models" and Drop it on your schematic. (You can see the engineering data in "Description" by right-clicking on the window 'a' then clicking on "Show Details")